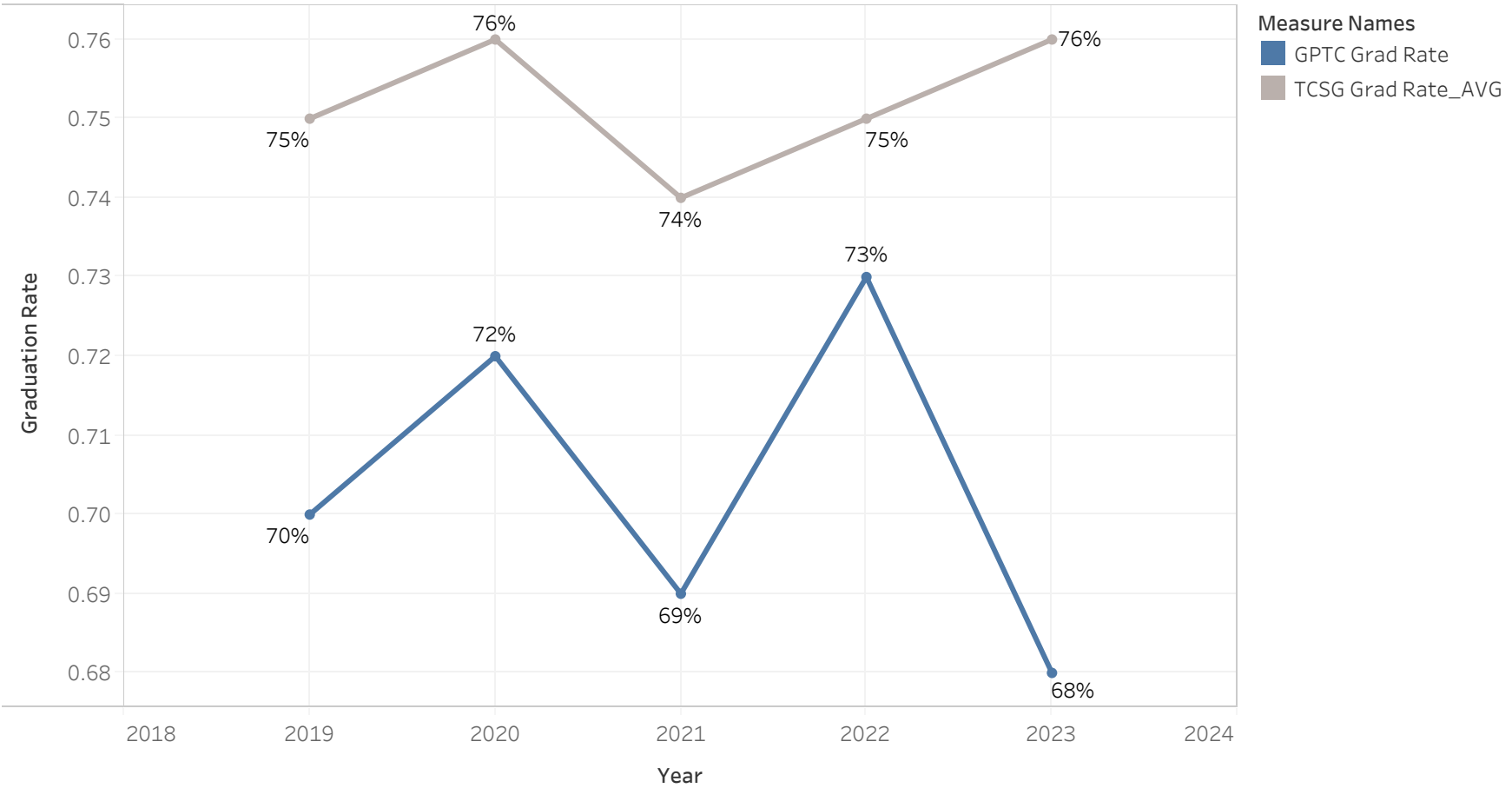


# TCSG Graduation Rate



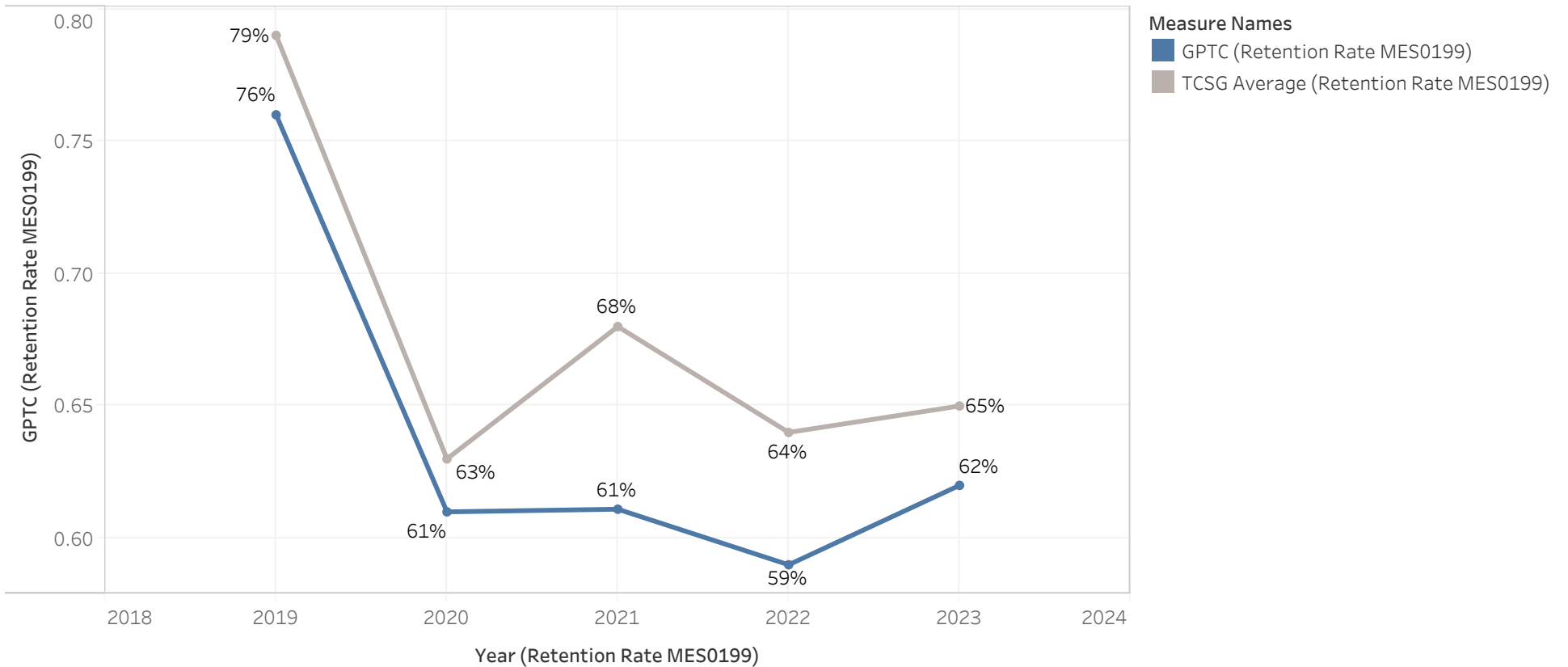
GPTC uses the Technical College System of Georgia's common data calculation to set its benchmark for graduation rate. The College's long-term goal is to exceed the TCSG average for graduation rate. Annual benchmarks are as follows:

- AY 2022 74%
- AY 2023 75%
- AY 2024 76%
- AY 2025 77%

The Graduation Rate is calculated as:  $\text{Graduates} / (\text{Graduates} + \text{Non-graduate leavers})$ .

A Non-Graduate Leaver is a student who, during the two-year period, took 12 or more hours, did not graduate, and did not enroll in the Spring or Summer semester of the second cohort year.

# TCSG Retention

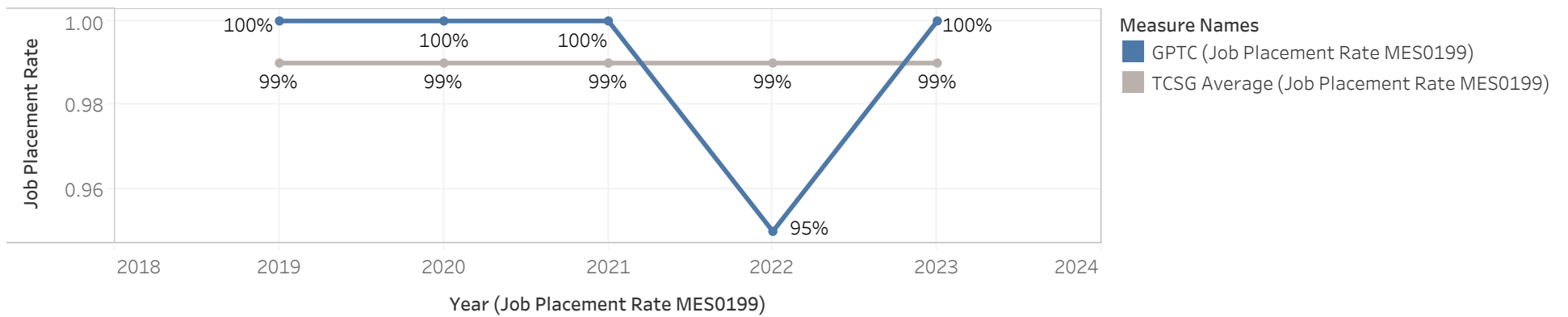


GPTC uses the Technical College System of Georgia's common data calculation to set its benchmark for retention rate. The College's long-term goal is to exceed the TCSG average for retention rate. Benchmarks were developed as follows:

- AY 2022 65%
- AY 2023 67%
- AY 2024 69%
- AY 2025 72%

The Retention Rate is calculated as: A fall cohort is tracked through the following academic year for retained or graduated students. Students in a cohort are retained if they enrolled in any postsecondary institution included in the National Student Clearinghouse (NSC) during the following academic year or graduated from any such institution during the two-year period. The fall cohort (denominator) includes first-time students (full-time or part-time) during the fall or summer semester, excluding prior high school dual enrollment. Students must be regular admits only (not provisional, developmental, or special admit) and may not be high school or transient student type.

## TCSG Job Placement

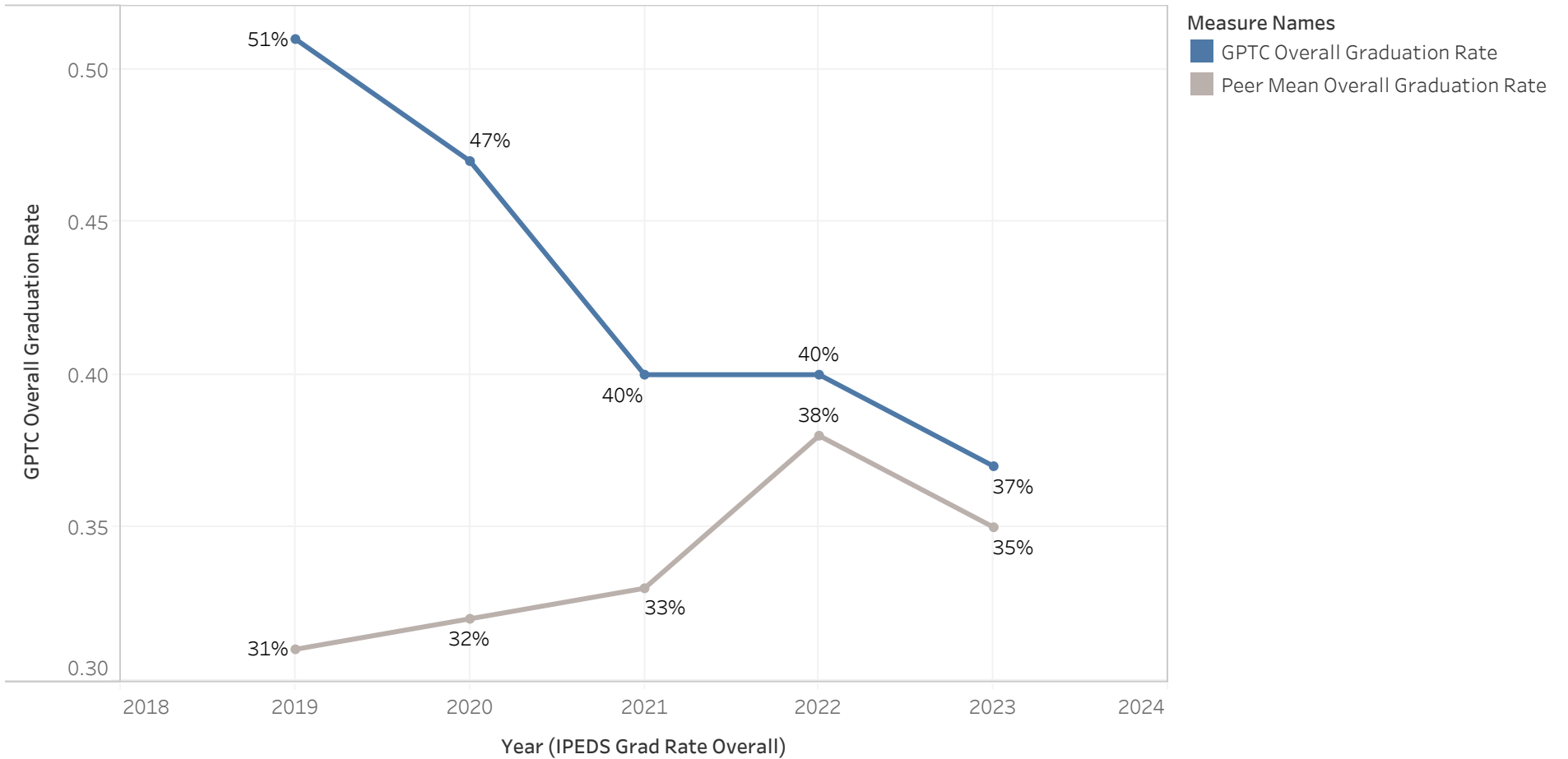


The placement rate tracks a cohort of graduates through September 15 of the year following graduation and uses the latest employment status entry for each student. The College's long-term goal is to maintain the consistent TCSG system average overall job placement rate of 99.0% through 2025.

The rate is calculated as follows:

$$\frac{(\text{Employed in Field, Related Field or Unrelated Field} + \text{Military} + \text{Employed in Field, Related Field or Unrelated Field \& Continuing Education} + \text{Continuing Education})}{(\text{Employed in Field, Related Field or Unrelated Field} + \text{Military} + \text{Employed in Field, Related Field or Unrelated Field \& Continuing Education} + \text{Continuing Education} + \text{Not Employed})}$$

# IPEDS Graduation Rate, Overall



The Integrated Postsecondary Education Data System (IPEDS) Graduation Rate for first-time, full-time degree-seeking students within 150% of normal time is used to set the College's benchmark alongside peer institutions while considering disaggregate data of gender, race and ethnicity, and financial need, as indicated by Pell recipient status. The College has set its IPEDS Graduation Rate benchmarks as follows. Steady improvement in graduation rate would maintain an IPEDS Graduation Rate at or above historical peer institution averages.

AY 2021 Benchmark 52%

AY 2022 Benchmark 53%

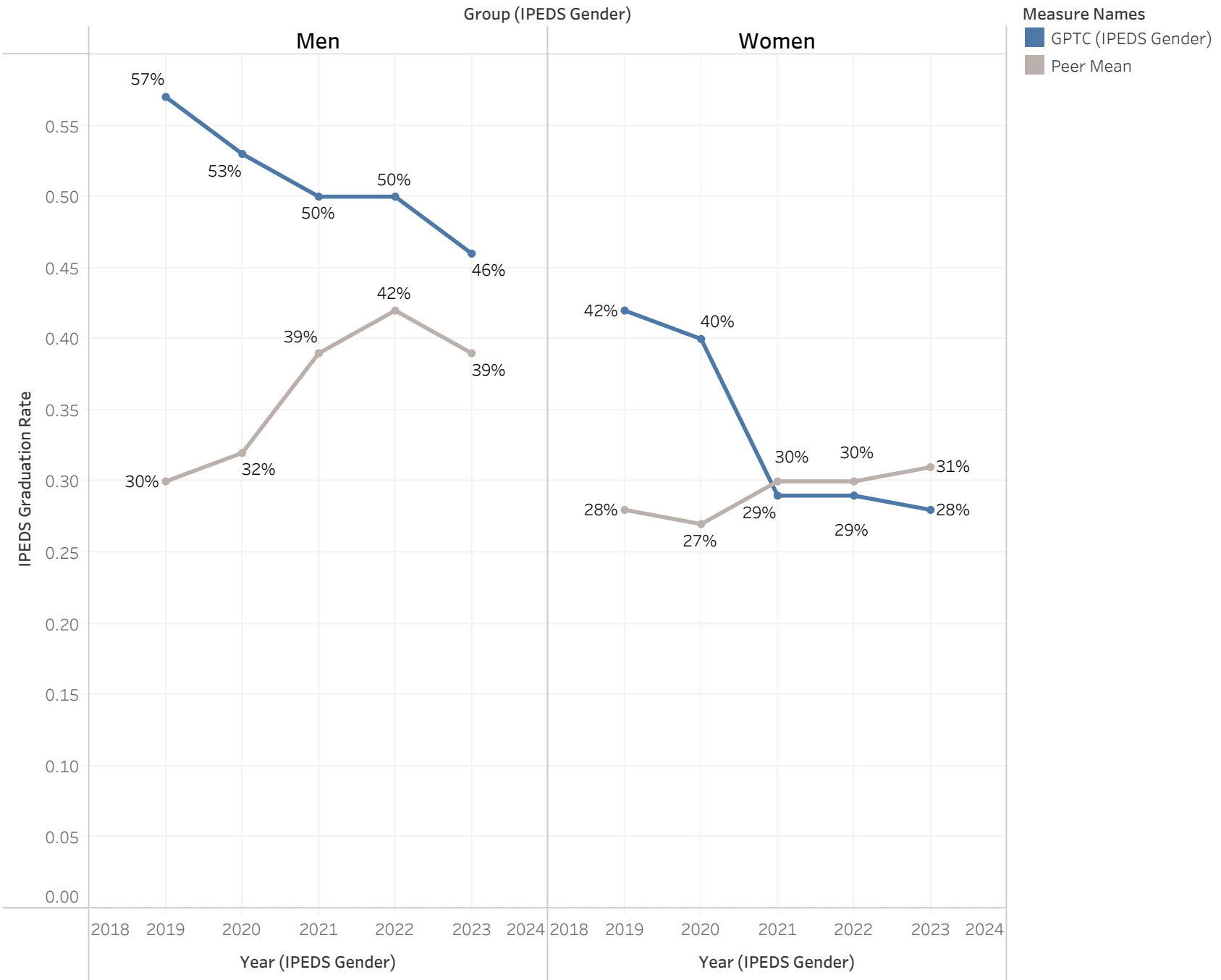
AY 2023 Benchmark 54%

AY 2024 Benchmark 55%

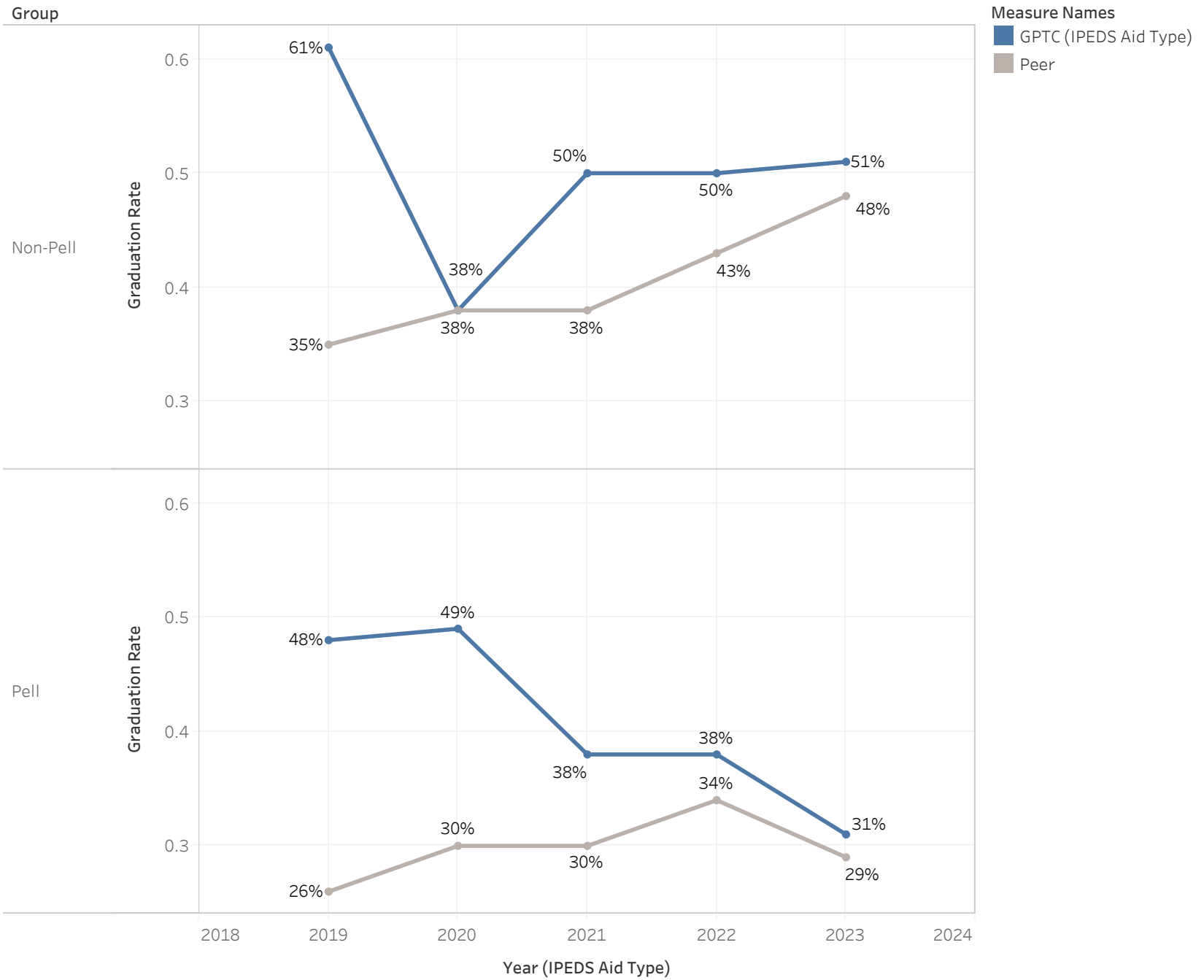
AY 2025 Benchmark 56%

Data from thirteen peer institutions were selected for comparison. Data reported include the most recent year available (2023), which reflects the award or graduation status of the adjusted Fall 2019 cohort of students.

# IPEDS Graduation by Gender



# IPEDS Graduation by Pell



# IPEDS Graduation by Race/Ethn

